

○ BOWKER SADLER PARTNERSHIP LIMITED
 ■ THIS DRAWING IS THE SUBJECT OF COPYRIGHT WHICH VESTS IN BOWKER SADLER PARTNERSHIP LIMITED. IT IS AN INFRINGEMENT OF COPYRIGHT TO REPRODUCE THIS DRAWING, BY WHATEVER MEANS, INCLUDING ELECTRONIC, WITHOUT THE EXPRESS WRITTEN CONSENT OF BOWKER SADLER PARTNERSHIP LIMITED WHICH RESERVES ALL ITS RIGHTS.
 BOWKER SADLER PARTNERSHIP LIMITED ASSERTS ITS RIGHTS TO BE IDENTIFIED AS THE AUTHOR OF THIS DESIGN.
 ■ DRAWING NOT TO BE SCALED.
 ■ REPORT ERRORS & OMISSIONS TO ARCHITECT.
 ■ CHECK ALL DIMENSIONS ON SITE.
 ■ DRAWING TO BE READ IN CONJUNCTION WITH THE HEALTH AND SAFETY PLAN AND ALL RELEVANT RISK ASSESSMENTS.



West Elevation
1 : 100

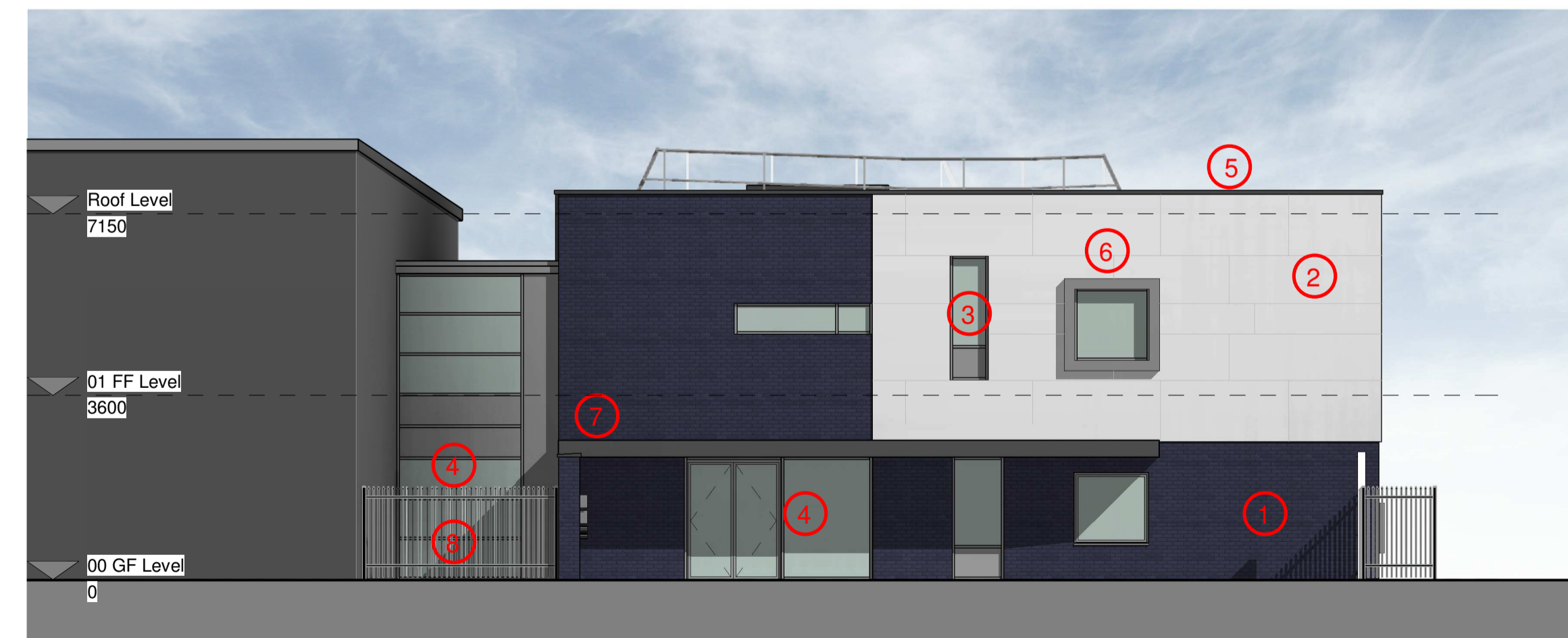
- Materials Key
- ① Blue Grey brickwork
 - ② Flat cladding panel
 - ③ Aluminium windows with integrated louvres
 - ④ Curtain walling
 - ⑤ PPC aluminium coping
 - ⑥ PPC projecting aluminium flashing
 - ⑦ Canopy roof with PPC aluminium flashing
 - ⑧ Weld mesh fencing



East Elevation
1 : 100



North Elevation
1 : 100



South Elevation
1 : 100

REV.	DATE	DRN.	CHKD.
C	09/11/21	AT	Material notes added to elevations AC
B	15/10/21	AT	Entrance area and classroom glazing amended AC
A	07/10/21	AT	Elevations updated to reflect plan changes AC

PROJECT

Gorton Education Village

CLIENT
Bright Futures Educational Trust

DRAWING
Proposed Elevations

SCALE	SHEET SIZE	DRAWN	CHECKED	DATE
1 : 100	@ A1	AT	AC	09/21

BOWKER SADLER ARCHITECTURE
 A: Hatherlow House, Hatherlow, Romiley, Stockport SK6 3DY
 T: 0161 406 7333
 E: office@bowker-sadler.co.uk
 W: www.bowker-sadler.co.uk

JOB No	DRAWING No	REVISION
20-030	1200	C

STATUS
PLANNING

